

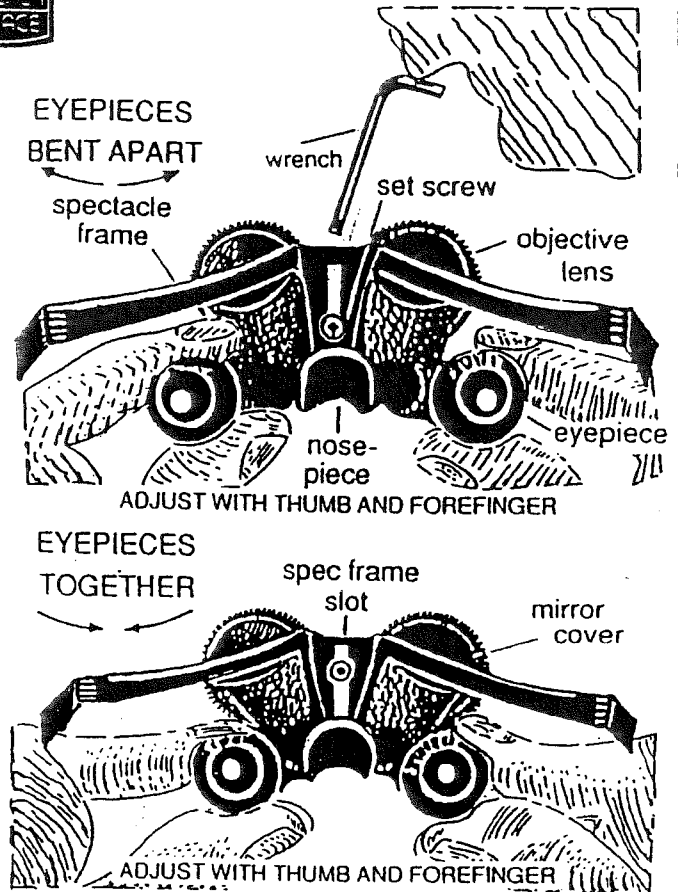
# BEECHER MIRAGE ADJUSTMENTS

## 6 - Quick & Easy Steps

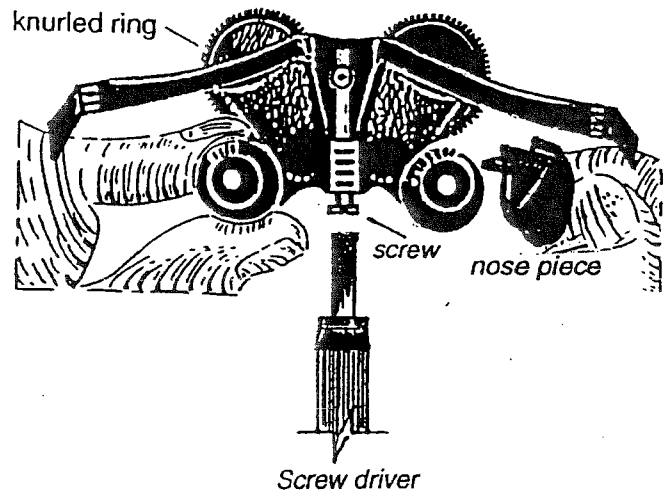


Using an inch rule, measure and then adjust interpupil distance by grasping both eyepieces and bend together to correct measurement. This adjustment will allow viewer to realize one round image while looking through the two viewing circles of the eyepieces.

2. Next take the supplied allen wrench (larger end) and loosen setscrew located in spec frame slot. Slide frame in slot until it contacts the mirror covers of the binocular. Now tighten setscrew. This adjustment aligns binocular horizontally and also gives it stability.
3. Next place the binocular on the patient's head and adjust the knotten head strap to hold binocular on nose snugly. While on head, observe height for vertical alignment.
4. For correct vertical eye alignment, place the nose piece in one of the four slots provided in the nose bracket. The nose bracket can also be turned 180 degrees to gain more vertical alignment.
5. The correct distance to the eye from the eyelens is 10 millimeters. For eye relief slide nose bracket up or down. Screw driver screw must screw into one of the holes in the nose bracket. The lower rule on the top of this page shows 10mm segments.
6. Focus for the right distance by adjusting each objective lens individually as follows. With the left eye closed, turn the knurled rim on the right objective barrel to the right and left until the object is clear for the right eye. Finally, close the right eye and turn the left objective to focus the left eye. Viewing with both eyes open, the patient should now see in perfect comfort.



### INSERTING THE NOSE BRACKET



## Important for Clinicians

Remember, for fitting next patient, be sure to loosen setscrew on frame before readjusting interpupil distance.

## Keep Binocular or Monocular Lens Clean

For best viewing, dampen soft clean cloth with lens cleaner or glass cleaner with ammonia and apply to each lens in a circular motion and polish dry. — NEVER immerse in water or hold under faucet.

## Warnings

1. Do not look or stare thru binoculars at direct sunlight.
2. Do not walk or run while looking thru binoculars.
3. Do not use or look thru binoculars while riding a bicycle or operating motorized vehicle.
4. Do not place binoculars down where direct sun rays could enter thru optics; fire may occur.

