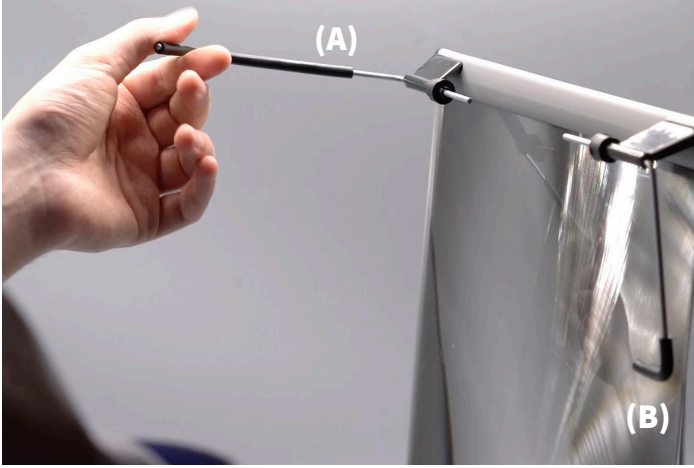
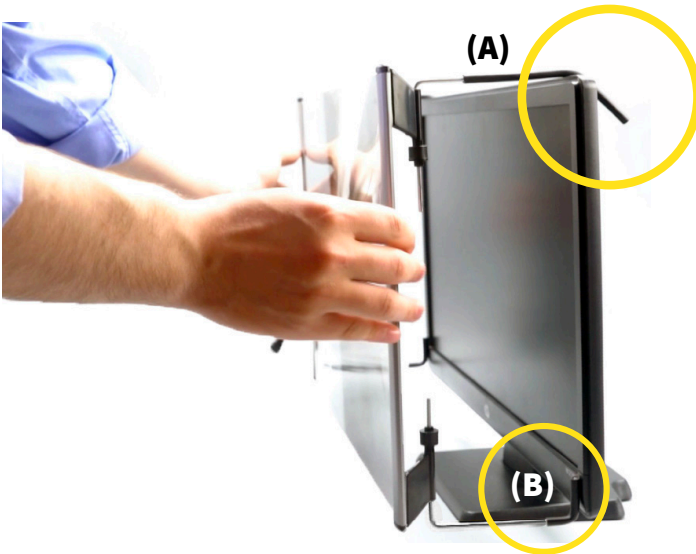


MAXVIEW® Installation

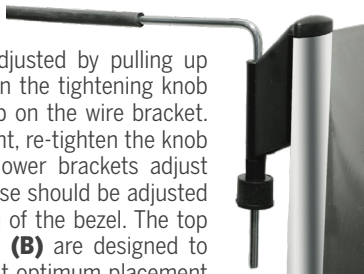
1. Unpack magnifier and unfold the metal support brackets. The metal wire brackets function as the mounting mechanism for the LCD Magnifier. The top brackets (the longer ones) **(A)** are designed to hook over the top of the monitor. The lower brackets **(B)** are designed to provide spacing and keep the Magnifier parallel with the LCD screen. The lower brackets rest on the front of the bezel.



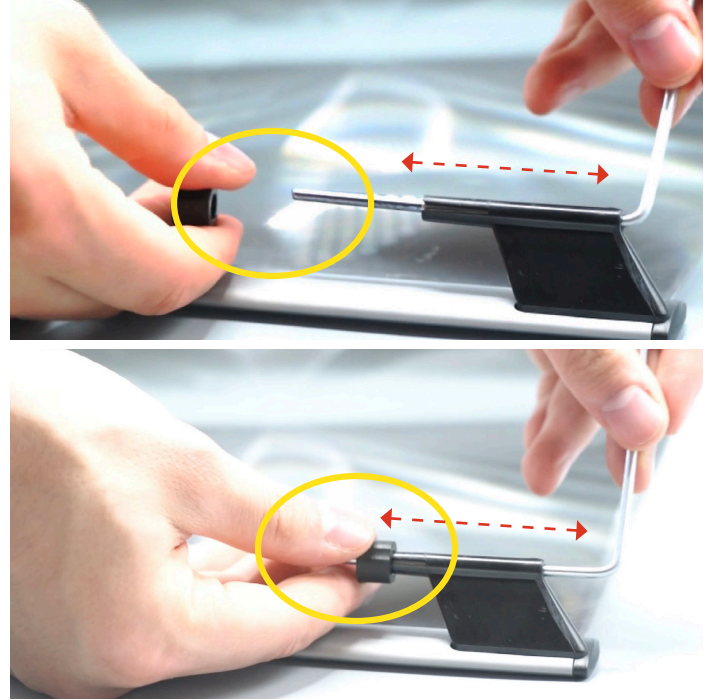
2. Mount the LCD Magnifier onto the monitor. Swivel brackets from lens so that they are perpendicular with the lens and Magnifier is parallel with the LCD.



3. The bracket height can be adjusted by pulling up or down on the wire. Gently loosen the tightening knob (Fig. 3), which will release the grip on the wire bracket. After adjusting to the desired height, re-tighten the knob to tightly grip the bracket. The lower brackets adjust vertically in the same manner. These should be adjusted to rest against the bottom section of the bezel. The top bracket **(A)** and bottom brackets **(B)** are designed to have vertical adjustability to permit optimum placement of the magnifier in front of the monitor for best visual performance.



How to adjust the brackets: Turn and pull down firmly on rubber washer to release it. Slide wire support to desired position. Replace and tighten washer.



4. To adjust magnification, swivel brackets inwardly to change the spacing from the magnifier to the monitor. The greater the distance, the larger the image will appear.



5. Cleaning The enclosed cleaning cloth is to be used for the front surface. The rear (grooved) surface should be cleaned with forced air.